



Poplar Bank News

We are a Respectful and Caring School

September 2014

Issue 1

Principal : Natasha Baage
Admin Assistant: Lana Grigorovitch
Secretary: Heather Vaz

Phone Number: 905- 953-8995
Website: www.poplarbank.ps.yrdsb.edu.on.ca
Superintendent: Dianne Hawkins
Trustee: Martin Van Beek

School Improvement Plan
Respectful School
3 Part Math Lesson
Differentiated Instruction and Assessment

Principal's Message

On behalf of the staff at Poplar Bank, I would like to extend a warm welcome to our new and returning students and families!

As the returning Principal at Poplar Bank P.S., it is an honor to have the opportunity to serve again such an outstanding community. I am looking forward to working with you, your children and the staff.

I truly believe that strong partnerships between parents and staff are crucial to maintaining a positive learning environment, where each student feels safe, valued and respected. It is through these strong connections that we can build a community focused on increasing student academic achievement and well being. Therefore, I invite you to visit our school, your school and to actively participate in your children's education. This participation may come in a variety of forms including: joining the School Council, volunteering at the school, attending school-wide events, checking your children's homework and agenda on a daily basis and communicating questions or concerns to me and the teachers.

I look forward to working with you. I wish everyone a great and fun start to the school year!

Mrs. Natasha Baage

UPCOMING EVENTS

Sept. 10: School Council meeting
Mon. Sept. 22: P.A. Day (No School)
Sept. 24: Curriculum Evening
Sept. 29-Oct 3: Safety Week
Sept 22-26: Book Fair
Sept. 26: Terry Fox Day



Daily Schedule at Poplar Bank for 2014-2015

7:50-8:05 Supervision Provided on the Pavement

8:03 a.m.	Entry Bell
8:05 a.m.	School Begins
8:05 - 10:05 a.m.	Classes
10:05 - 10:35 a.m.	Recess
10:35 - 11:55 a.m.	Classes
11:55 - 12:15 p.m.	Lunch
12:15 -12:55 p.m.	Lunch Recess
12:55- 2:35 p.m.	Classes
2:35 p.m.	Dismissal

Students are to be in class by 8:05 a.m. or they will be marked absent. Should students arrive at, or after 8:05 bell, they should report to the office for a late slip. This reduces unnecessary calls home.

Curriculum Evening

You are invited to our curriculum evening on the evening of Wednesday September 24, 2014. The session times are as follows.

Session 1	6:30 - 7:00 p.m.
Session 2	7:00 - 7:35 p.m.

Medication

Either on a regular basis or at times throughout the year some students may need to take medication at school. Parents are required to complete a Self/Staff Administration of Medication Forms signed by the parents and approved by the Principal. For legal and safety reasons, written permission is required for all medication including inhalers, Aspirin, Tylenol, Advil, etc. All medication is kept locked in the office and students are supervised as they take any medication.

Students are not permitted to bring medication to school and keep in their classroom, lunch bag, backpack or lockers.

Epi-Pens

If a student is anaphylactic, please ensure you have picked up the necessary forms from the office to fill in. Each student is required to have one epi-pen in the office and one on their person. If you have not received these forms, please see the office.



Safety is Our Top Priority: Routines and Guidelines

1. Nut Alert! We are a Peanut/Nut-Free School

Please do not send peanut, peanut products or other foods that contain nuts or nut products to school. We have students and staff members who are anaphylactic. This means that exposure to even the smell of peanuts can result in a severe allergic reaction that can be life threatening. Some safe snack foods are: fruit, veggies, cheese and crackers, fruit roll-ups, mini-bagels with cream cheese, milk puddings and yogurt. **Prior to sending in food for the class, please contact your child's teacher.**

2. Before School:

Supervision on the school yard pavement begins at 7:50 a.m. Between 7:50 -8:00 a.m., all grade 1-8 students are together on the pavement around the east and south sides of the school building. The entrance bell rings at 8:00 a.m. Students are to walk to their respective entry doors, proceed to class and get ready for the school day which begins at 8:05 a.m.

3. Picking Your Child Up at 2:35 p.m.:

When picking up your child, please do not park in the drive through at the front of the school or in the North bus loop as these areas are out of bounds. Meet your child at their exit doors.

4. Parents Visiting the School:

- a) When dropping off a child in the morning, please do not walk through the school with your child. Students are to wait outside their assigned entry doors.
- b) When dropping off your child's lunch or homework, please come into the office and we will ensure that your child gets the item.
- c) We will not interrupt curriculum times for you to speak to your child unless it is an emergency. Please make any alternate arrangements at home.
- d) When picking up your child for an appointment, please come into the office to sign your child out and we will call your child down to the office.
- e) When picking up your child at 2:35 p.m., parents are to wait outside the appropriate exit doors.

Lunchtime Routines

Any student who brings lunch to school is to remain at school and is not permitted to leave school property unless he/she has parental permission.

Students will:

- ***Follow school expectation regarding lunch procedures and behavior.***
- ***Sign out at the office if leaving with a dated note signed by a parent (unless you have completed 7/8 permission form)***
- ***Once children leave school property and return to school, they are NOT permitted to leave a second time during the lunch hour and must line up with their class for regular entry at 12:55.***

Lunch privileges may be withdrawn if rules and expectations are not followed.

6. Students Who Take the Bus:

During the first week, there are sometimes difficulties with bus time arrivals and departures. The transportation department works closely with us to sort out the problems we are experiencing. For help and information, feel free to call Mrs. Grigorvitch or Mrs. Vaz in the office or you may seek assistance at www.schoolbuscity.com. Your child's safety is our top priority. September is a time for parents to discuss bus safety, and stranger danger. These rules will also be reviewed and reinforced in September and throughout the year by school staff. **Please note that we do not grant permission for students to change buses.** Students must ride on the bus assigned to them by the Transportation Department



7. After School:

Students are dismissed at 2:35 p.m. and they are required to leave the school grounds immediately after school. There is staff supervision on the east and south pavement adjoining the school from 2:35-2:45 p.m. Please note that there is no supervision for students who choose to play in the nearby Town of Newmarket playground or fields around the school. Students who have not been picked up by their parents are to report to the school office at the 2:45 bell where they will wait and an office staff member will contact a parent.

8. Safe Play Guidelines:

In order to prevent physical injury and because of our concern for student safety, students at Poplar Bank P.S. are expected to avoid activities that involve aggressive play and physical contact. Recess activities that are not acceptable include wrestling, piggy-backing, football, lacrosse, tripping, baseball, pushing, shoving, body-checking, poking, punching, play fighting and other forms of rough play in busses, stairwells, hallways and playgrounds. During recess breaks, students are able to play organized games such as basketball, soccer and foot hockey as well as activities such as skipping and tag. We ask parents to regularly review these expectations with their son/ daughter to ensure that our school is a safe place for everyone.





Poplar Bank Staff 2014-2015
We are proud to present the Poplar Bank Staff:

GRADE 1	Mme Gwyn	English/Math	Mme Hampton
GRADE 1	Mme Roach	English / Math	Mr Maccarone
GRADE 1	Mme Thomas	Science	Mme Rudyk
GRADE 1	Mme Bordea	Library/Literacy	Mme Hodge
GRADE 2	Mme Green	Admin Assistant	Mrs Grigorvich
GRADE 2	Mme Moubarak	Secretary	Mrs Vaz
GRADE 2	Mme Samaai	Lead Caretaker	Mrs Davis
GRADE 2/3	Mme McGraw	Caretaker	Mr Allen
GRADE 3	Mme Hazlewood	Caretaker	Mr Papaevangelou
GRADE 3	Mme Parenteau	Principal	Mme Baage
GRADE 4	Mme Kendall		
GRADE 4	Mme Tummon		
GRADE 4/5	Mme Irwin		
GRADE 5	Mme Slessor		
GRADE 5	Mme Wansbrough		
GRADE 6	Mr Korman		
GRADE 6	Mme Jenicek		
GRADE 7	Mme Bimo		
GRADE 7/8	Mme McDonald		
GRADE 8	Mme Sampson		
Math/English	Mme Middleton		
Music	Mme Smith		



CAN YOU HELP?

We are in need of Lunch Assistants for the 2014-2015 school year. This is a **paid position** from 11:55- 12:55 p.m. and you choose the days you wish to work. Please apply in the office.

Useful Websites for Parents

Links for Parents (compiled by the Ministry of Education):

<http://www.edu.gov.on.ca/eng/parents/links.html#learn>

Resources to Help Your Child (compiled by the Ministry of Education):

<http://www.edu.gov.on.ca/eng/parents/howcanihelp.html>

Ontario Ministry of Education: <http://www.edu.gov.on.ca/eng/index.html>

EQAO: <http://www.eqao.com/>

TumbleReadables: <http://www.tumblebooks.com/tumblereadable/>

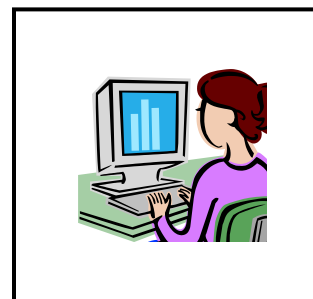
Parents as Partners: <http://www.parents-as-partners.ca/parents.html>

The Canadian Safe School Network: <http://www.canadiansafeschools.com/parents/overview.htm>

TVO Kids: <https://www.tvokids.com/>

Link to Learning: <http://www.linktolearning.com/>

Discovery Channel: <http://dsc.discovery.com/>



HOW CAN I HELP MY CHILD AT HOME?

Parental Support of Literacy Skills

Literacy is about more than reading and writing. It is about how we communicate in society. Literacy takes on many forms: on paper, on the computer screen, on TV, on posters and signs. At Poplar Bank, we regard parents as partners in our quest to develop our students' literacy skills.

Reading should be an activity enjoyed by all at home. Reading to or with your child on a regular basis and talking about the book or article read are two important activities parents and children can share.

The following are a few tips you may wish to practice at home to make the reading even more productive.

1. Ask your child to look at the cover and name any objects and characters they know. Read the title and the author's name. See if the cover and title remind you of any other books you have read together.



2. Flip through the pages and note other objects and characters in the pictures. This is called "previewing" the book. Ask your child to "predict" what the story may be about.

3. For primary students, run your finger beneath the words as you read. Stop once or twice to ask questions like, "What do you think will happen next and why?" and then read on to compare the story to your child's guesses.

4. Afterwards, sum up the story line by talking about the beginning, middle and end of the book.

5. Connect the story line to real-life events. Did an event in the story ever happen to you or your child? Do the characters remind you of anyone you know?

6. Evaluate the story or article. (Did your child like the story? What was the best part? Who was the silliest character? Did the article give accurate information?)

Have fun reading together!

Library Volunteers

There are numerous tasks involved in the operation of an effective and efficient library and any assistance you can give would be most appreciated

If you are interested in volunteering in our library please contact Mme Hodge at (905)953-8995 or roxanne.hodge@yrdsb.ca

Don't Forget Our Book Fair!
Our Book Fair will be held
the week of September 22.
More information to come.



Safe Arrival Program

Our students' attendance check is an important part of our daily routine to ensure that your children have arrived safely at school. We ask that you cooperate with us by following the steps listed below:

1. Call the school before 8:00 a.m. if your child will not be attending school that day and / or will be late.
2. Please use our voice mail system to leave us a message before/after school hours.
3. Please call every day of your child's absence. This is the only way to ensure the integrity of the Safe Arrival Program.

The following set of actions will take place if your child is not in school and his/her absence has not been accounted for by a call or by a written note.

- A. First, we will call your place of residence
- B. In the event that we are unable to reach you at home, we will next call your place of business/cell
- C. If no contact is made then we will call the emergency contacts you have provided...and lastly...
- D. The York Region Police will be called for assistance in locating your child.



The Safe Welcome Program At Poplar Bank

Please note that the main entrance door will be unlocked 15 minutes prior to the first bell (7:50 a.m.).

Starting Tuesday, September 2nd , the school front door will be unlocked between the time of the dismissal bell (2:35 p.m.) and when the main office closes (3:30 p.m.).

The door to the Childcare program will continue to be kept unlocked between 3:30 p.m. and 6:00 p.m..

On the evenings when there is a school event taking place, the front entrance door will be unlocked 15 minutes prior to the commencement of the event.

Please use the door bell for entry into the school when the door is locked

Save the Environment!

Reduce School Costs Via Electronic Communication

Our School is going green to help save trees and reduce school costs. We are requesting that parents sign up on our electronic mailing list so that we can keep you informed via email of upcoming events and newsletters.

Log on to the school's website and follow the link at:

www.poplarbank.ps.yrdsb.edu.on.ca





Student Transportation Services of York Region
320 Bloomington Road West
Aurora, Ontario L4G 0M1
905-713-2535
FAX: 905-713-2533
Web site: www.schoolbuscity.com

Transportation Eligibility

STSYR001

Revised: Jan. 2013

Student Transportation Services of York Region (STSYR) provides transportation service in accordance with the policies of its member School Boards, the York Region District School Board (YRDSB) and the York Catholic District School Board (YCDSB)

Students may be eligible for transportation if their primary address is located within their home school attendance area and is further than the following distances:

YCDSB

Grades JK – 3	1.2 km's
Grades 4 – 8	1.6 km's
Grades 9 – 12	4.8 km's*

*Students living further than 3.2 km's may be eligible if Public Transit is not available.

YRDSB

Grades JK – 3	1.2 km's
Grades 4 – 8	1.6 km's
Grades 9 – 12	Students living in an area serviced by Public Transit are not eligible for school bus transportation.

Distance Measurement

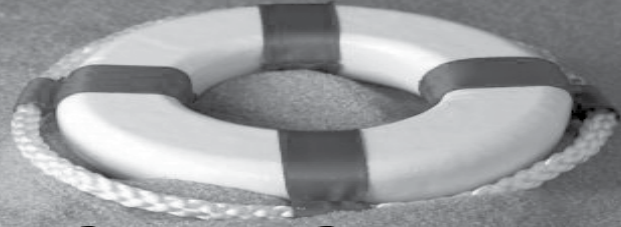
Eligibility for Transportation will be determined by STSYR using Trapeze routing software or ArcView G.I.S. software. These software's measure the shortest distance by road from the closest access of the student's property to the closest access of the school property. These measurements may include the use of walkways and parks.

Students may be transported in exceptional circumstances within a school Non-Transportation Zone. This is an area designated by Board policy as ineligible for school vehicle transportation. This may include service for students with special needs and students with documented medical conditions from a certified medical practitioner.

Please help us by saving your magazine orders and renewals for our Magazine Fundraising Program

S.O.S.!

(SAVE OUR SUBSCRIPTIONS)



OUR FAMILY READING MAGAZINE FUNDRAISER IS RETURNING SOON - AND THIS YEAR IT IS BIGGER AND BETTER! INTRODUCING MAGAZINES & MEMORIES - NEW THIS YEAR – PHOTO PRODUCTS!

Each year, we hold our magazine subscription fundraiser to raise money to benefit our students while also encouraging more at home reading. The success of the program depends on your participation.

“To Remember This” – New this year! Make your own photo keepsakes! Choose from cards, calendars, stickers, posters, photo books, chore charts, and more! You can create your own keepsake, share your keepsake online, or give as gifts. You make the memories and this program helps you keep them!

Please save your magazine subscription renewals for our sale. It is only when you renew directly through our program that our school receives any profit from your order.

If you are anxious to renew before the official campaign begins, you can support us today by shopping online! It's easy . . . visit www.QSP.ca! All early orders will count towards your child's rewards.

Plan Ahead and Help Even More.....



Think ahead of photo invitations, holiday cards, etc., you may need. Order now and create them when you need them.

Consider giving magazine subscriptions as gifts this year!
Each issue acts as a reminder of your thoughtfulness!

Order a subscription for your child! Children love receiving mail and it's proven that reading print material benefits children far greater than reading material online.

Let friends and family know about our upcoming fundraiser. Send them an email using the email service at www.QSP.ca and your child will receive a thank you reward

Thank you in advance for your support. We count on your participation!